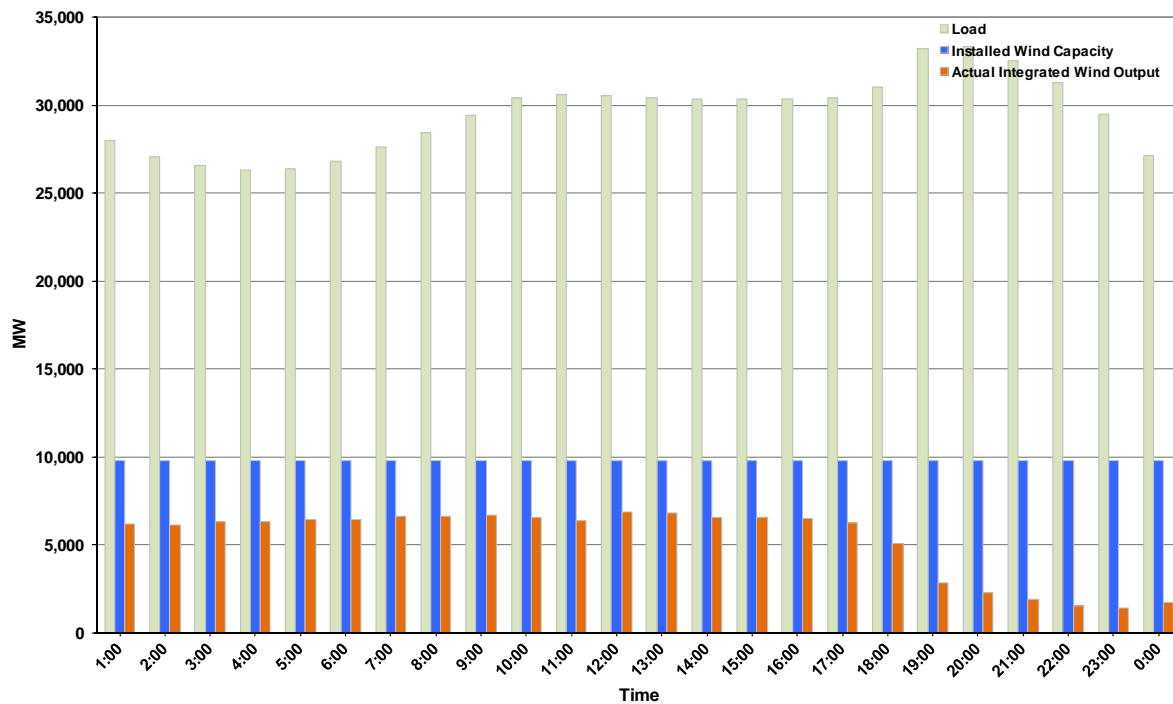




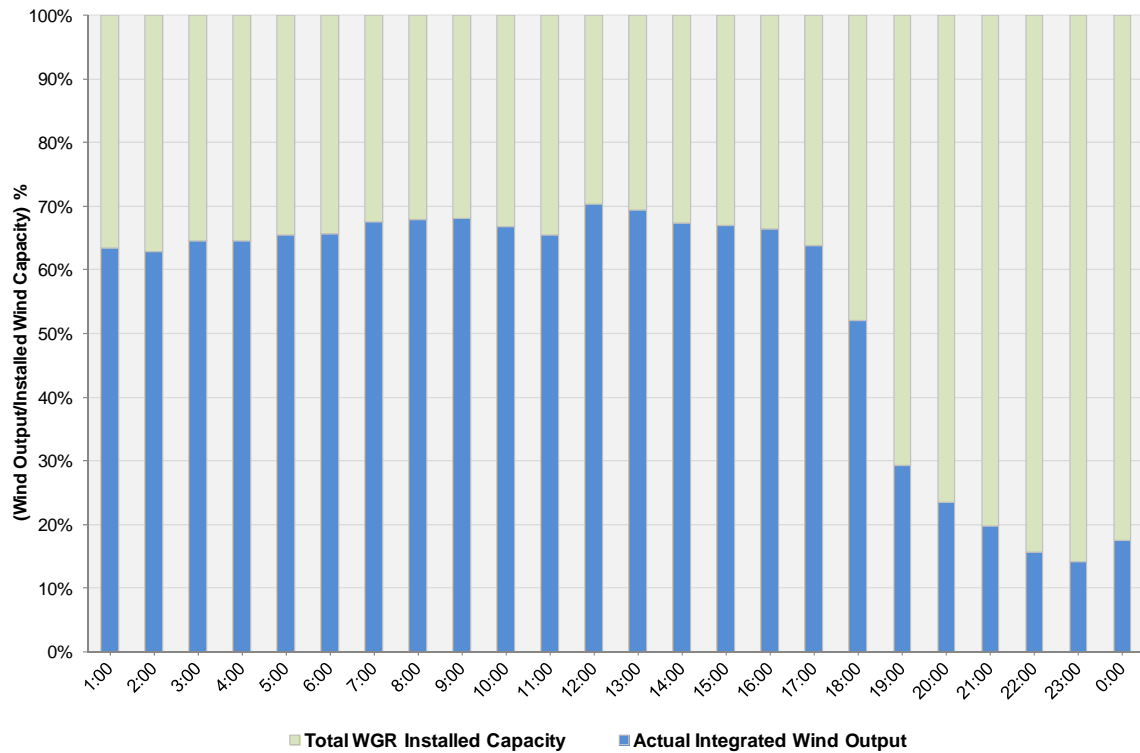
## ERCOT Grid Operations Wind Integration Report: 01/22/12

Peak Load	33,332 MW
Load Peak Hour (HE)	20
Wind over Peak	2,298 MW
Wind Record 10/07/11	7,400 MW
Max Wind Value	7,048 MW
Wind Peak Time	11:00
Wind Integration %	23.10%

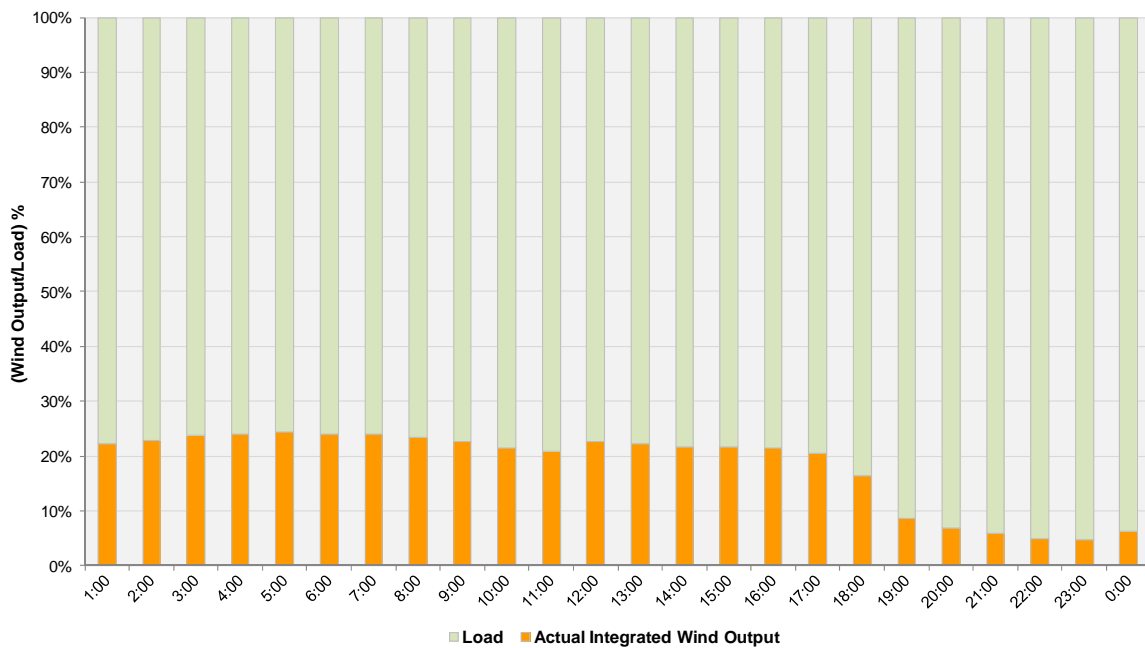
Hourly Average Actual Load vs. Actual Wind Output  
01-22-2012



**Actual Wind Output as a Percentage of the Total Installed Wind Capacity**  
**01-22-2012**



**Actual Wind Output as a Percentage of the ERCOT Load**  
**01-22-2012**



ERCOT Load vs. Actual Wind Output 1/15/2012 - 1/22/2012

